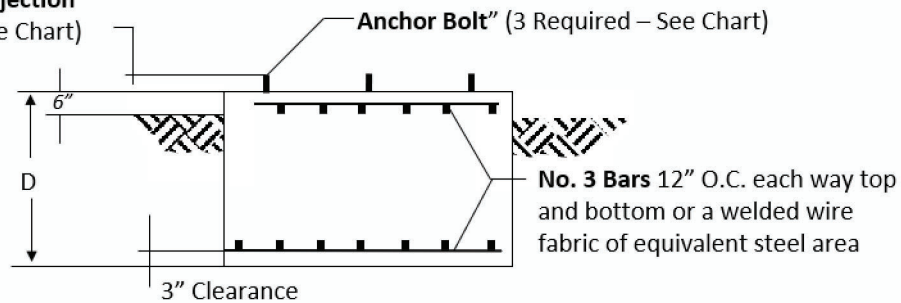


Maximum Bolt Projection
(See Chart)



Foundation Notes

1. Concrete, 3000PSI minimum, ultimate strength.
2. ASTM A-615 Grade 40 deformed re-bars.
3. All forms must be removed from concrete before placing compacted backfill.
4. Foundation designed for 2000 PSF soil.
5. It is recommended that a wood template be constructed by the user for holding anchor bolts at the proper dimensions while concrete is being poured.
6. Reinforcing is recommend for temperature and shrinkage control.
7. Welding is prohibited on reinforcing steel and embedment.

BASE CHARTS

HINGED BASE 36 (HB36)

QTY	PART #	DESCRIPTION
1	HBC1	Center Stub Pipe 1½" STD
1	HBL1	Left Stub Pipe 1½" STD
1	HBR1	Right Stub Pipe 1½" STD
3	HBV1	Yoke
3	AB20	Anchor Bolt ¾" x 20"
6	W34	¾" Split Washer
6	B9163	9/16" x 3" Bolt
12	N34	¾" Heavy Hex Nut
12	N916	9/16" Hex Nut
3	BP13	3/8" x 3" x 3" Bearing Plate
6	B91612	9/16" x 3½" Bolt

HINGED BASE 78 (HB78)

QTY	PART #	DESCRIPTION
1	HBC2	Center Stub Pipe 2" STD
1	HBL2	Left Stub Pipe 2" STD
1	HBR2	Right Stub Pipe 2" STD
3	HBV2	Yoke
3	AB30	Anchor Bolt 1" x 30"
6	W1	1" Split Washer
9	B91612	9/16" x 3½" Bolt
12	N1	1" Heavy Hex Nut
15	N916	9/16" Hex Nut
3	BP14	3/8" x 3½" x 3½" Bearing Plate
6	B9164	9/16" x 4" Bolt

HINGED BASE

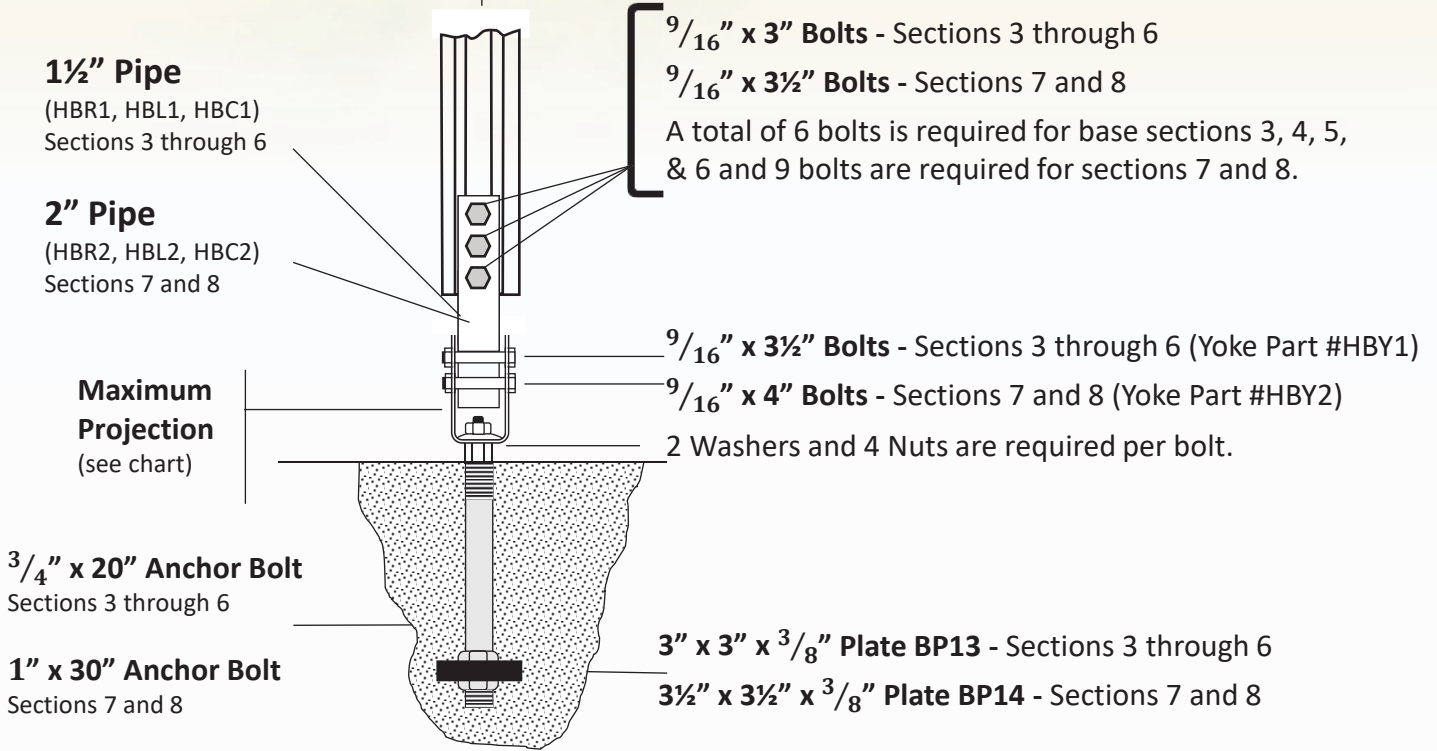
Sec #	M	N	R	Max Proj	Anchor Bolt	Bearing	D	W	X	CU YDS CONC
3	13 5/16"	11 1/2"	7 11/16"	2 5/8"	(3) ¾" x 20"	BP13	4' - 0"	3' - 6"	1' - 9"	1.8
4	15 11/16"	13 9/16"	9 1/16"	2 5/8"	(3) ¾" x 20"	BP13	4' - 0"	4' - 0"	2' - 0"	2.4
5	18 5/16"	15 7/8"	10 9/16"	2 5/8"	(3) ¾" x 20"	BP13	4' - 0"	4' - 6"	2' - 3"	3.0
6	21"	18 3/16"	12 1/8"	2 5/8"	(3) ¾" x 20"	BP13	4' - 0"	4' - 9"	2' - 4½"	3.4
7	23 1/4"	20 1/8"	13 7/16"	3 1/4"	(3) 1" x 20"	BP14	4' - 0"	5' - 3"	2' - 7½"	4.1
8	26 3/16"	22 11/16"	15 1/8"	3 1/4"	(3) 1" x 20"	BP14	4' - 0"	5' - 9"	2' - 10½"	4.9

BASE STUBS

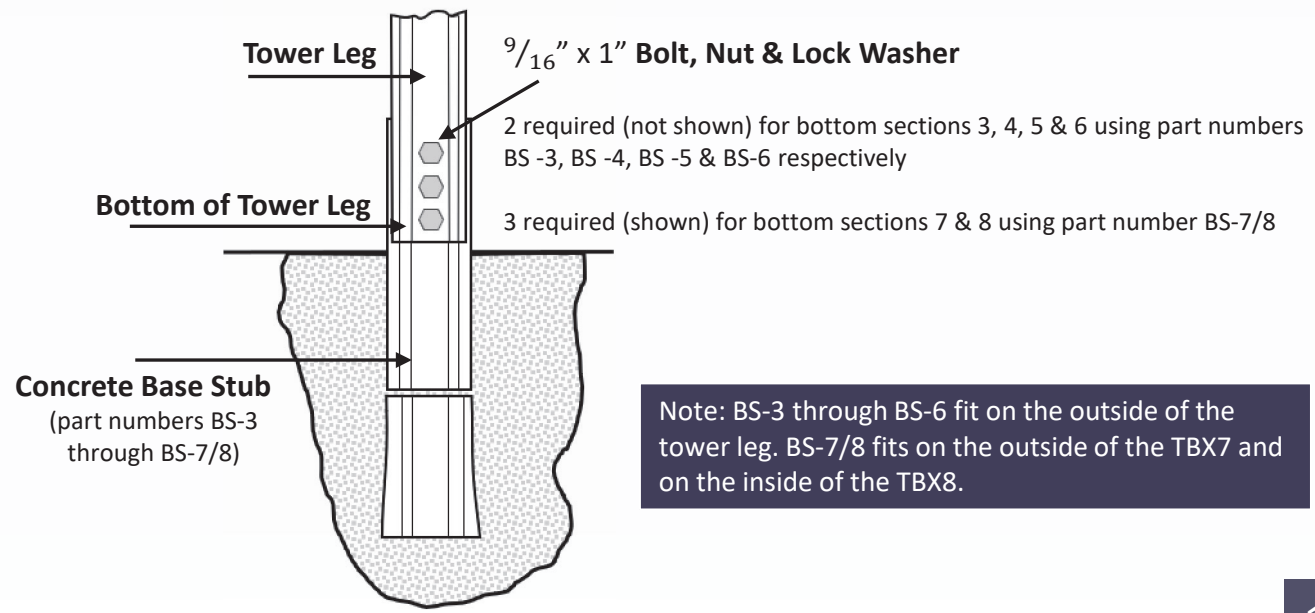
Part #	Sect. #	W	X	D	CU YDS CONC	A
BS-3	3	3'-6"	1'-9"	4'0"	1.8	1'-1¼"
BS-4	4	4'-0"	2'-0"	4'0"	2.4	1'-2"
BS-5	5	4'-6"	2'-3"	4'0"	3.0	1'-3½"
BS-6	6	4'-9"	2'-4½"	4'0"	3.4	1'-3½"
BS-7/8	7	5'-3"	2'-7½"	4'0"	4.1	1'-4¾"
BS-7/8	8	5'-9"	2'-10½"	4'0"	4.9	1'-6"

TOWER LEG

HINGED BASE



BASE STUBS



TBX TOWERS

Thomas Shelby and Co, INC

309 South Park Drive

St. Marys, OH 45885

(419) 394-3377

sales@thomasshelby.com

www.tbxtowers.com

www.thomasshelby.com

MANUFACTURED IN THE USA