



**TBX Anti-Climb Panels**

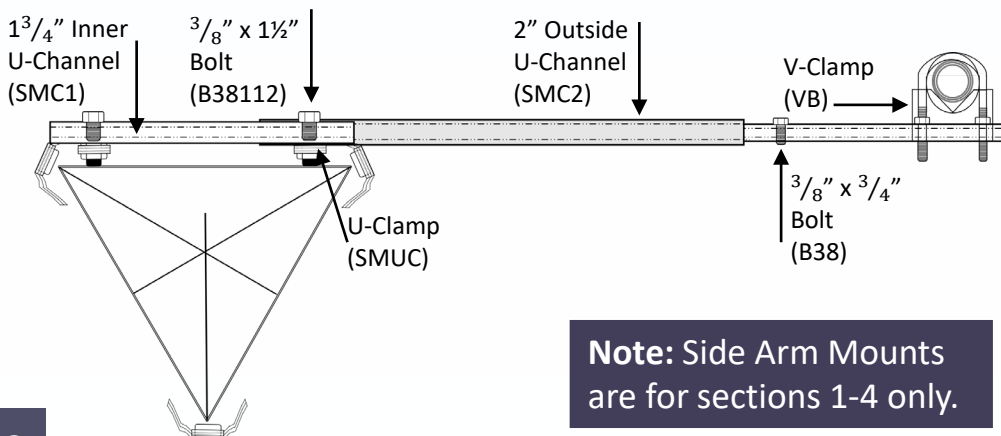
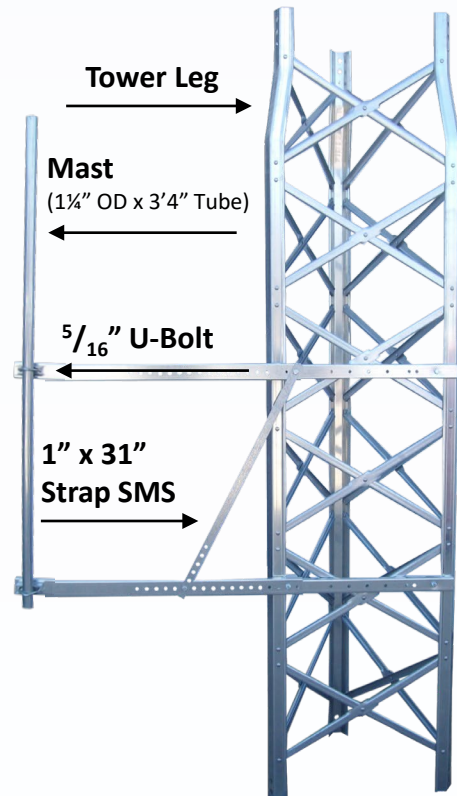
The Anti-climb panels attach to your bottom section of tower and will have the same ending number as the bottom section. A TBX 40 Tower is Sections 1, 2, 3, 4 and 5 with 5 as the bottom section. The anti-climb for a TBX 40 is ACP3-5. See page 3 to see which Anti-Climb Panel to order for your tower.

- Flat surface for extra security
- Made of durable 20ga steel
- Available for TBX, THBX and THDBX series

**TO USE THE ACP:**

- Bend all tabs to the center
- Tabs will fit in "V" of braces
- Run a rod from the top through the tabs and braces to secure panels

SIDE MOUNT (SM)		
QTY	PART #	DESCRIPTION
2	SMC2	2" Wide Outside Channel
2	SMC1	1 <sup>3</sup> / <sub>4</sub> " Wide Inner Channel
4	SMUC	U-Clamp
1	SMS	1" x 31" Strap
1	P11434	1 <sup>1</sup> / <sub>4</sub> " OD x 16 GA Tube 3'4"
4	B38112	<sup>3</sup> / <sub>8</sub> " x 1 <sup>1</sup> / <sub>2</sub> " Bolt
5	N38	<sup>3</sup> / <sub>8</sub> " Nut
1	B38	<sup>3</sup> / <sub>8</sub> " x <sup>3</sup> / <sub>4</sub> " Bolt
5	W38	<sup>3</sup> / <sub>8</sub> " Washer
2	VB516	<sup>5</sup> / <sub>16</sub> " U-Bolt
4	N516	<sup>5</sup> / <sub>16</sub> " Nut
4	W516	<sup>5</sup> / <sub>16</sub> " Washer
2	VB	V-Bracket



**Note:** Side Arm Mounts are for sections 1-4 only.

# TBX TOWERS

## Thomas Shelby and Co, INC

309 South Park Drive

St. Marys, OH 45885

(419) 394-3377

[sales@thomasshelby.com](mailto:sales@thomasshelby.com)

[www.tbxtowers.com](http://www.tbxtowers.com)

[www.thomasshelby.com](http://www.thomasshelby.com)

MANUFACTURED IN THE USA