

WHAT TO EXPECT WHEN RECEIVING YOUR TOWER

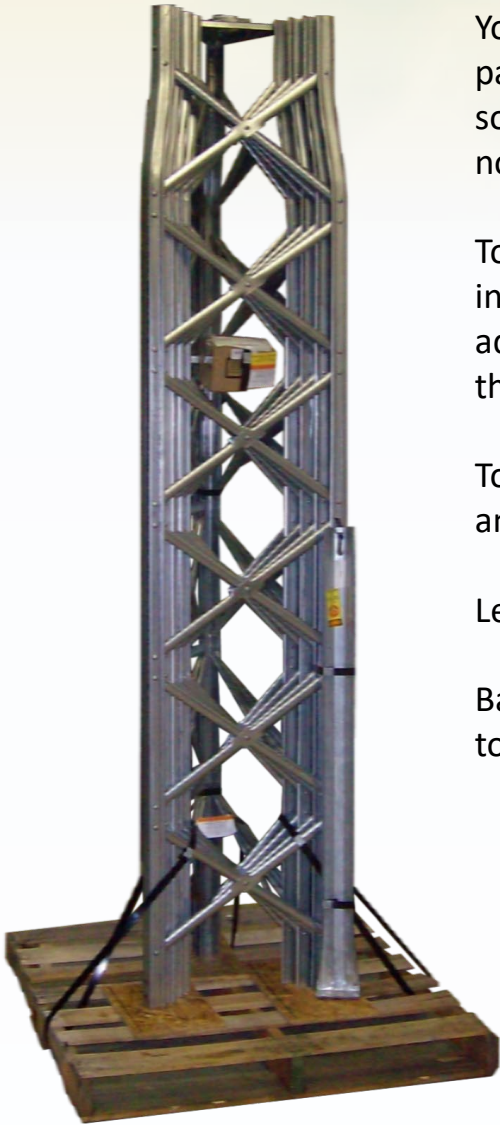
Your tower will arrive via LTL Freight. It is shipped on a pallet for support and safety. Please inspect your tower as soon as it is delivered and note with the driver any noticeable issues.

Towers are shipped nested. Smaller sections are placed inside of the larger sections. Hardware packs and any additional accessories that you ordered will be strapped to the tower with banded strap.

Tower kits include the rotor plate, top plate, hardware pack and one face of steps on the top section.

Leg hardware is included with each section purchased.

Base stubs are sold separately but will be strapped to the tower on shipment.



BREAKING DOWN THE BUNDLE

1. Mast, accessories and hardware packages need to be removed prior to de-bundling of the tower sections.
2. Bundle is to be laid on its side on a flat, smooth surface.
3. Remove innermost section (smallest) by sliding from the bottom (widest opening). Proceed with each additional section. Protective gloves are suggested when handling towers. **Pry tools are NOT recommended on towers.**
4. Inspect each section for any transport or shipping damages. It is acceptable to replace any broken or loose rivets with a snug fitting machine bolt, nut or lock washer. If replacing a rivet, make sure the bolts are securely tightened.

TOWER ASSEMBLY

You should choose the appropriate base for your tower, *concrete base with base stubs or hinged concrete base*, and ensure that it is properly installed before assembling your tower. See foundation information starting on page 8. Bolt the base section (*the largest section*) to the base. Proceed with the erection as follows:

1. The legs on each higher section slide inside the previous one and should be positioned on the stop rivet in the previous leg. This stop rivet is to prevent the tower section being installed from slipping through the previous section and is not for the purpose of aligning the assembly holes. (*Special Note: the TBX8 section does not have a stop rivet in it, so extreme caution should be used when installing the TBX7 section into the TBX8 section.*)
2. Erect the tower, section by section vertically, by inserting the next proceeding section into the previous allowing the stop rivet to catch the section. Install the appropriate hardware. The tower can be assembled on the ground and hinged up when using the HB36 or HB78 bases. Please use extreme caution when doing this and watch for power lines, trees or anything in the line of the tower. Do not load additional items onto the tower prior to erection when using the hinged base.
3. Loose, missing or faulty rivets should be replaced with a similar size nut and bolt which can be obtained at a local hardware store.

ADDITIONAL INFORMATION

- Do not install towers near power lines. All towers should be installed out of falling distance of power lines since every electrical and telephone wire should be considered dangerous.
- It is recommended that anti-climb sections should be installed on all towers to prevent unauthorized persons from climbing towers. Only one person should be on a tower at a time.
- All antenna installations must be grounded per local or national codes.
- All towers should be installed and dismantled by experienced and trained personnel.
- All types of antenna installations should be thoroughly inspected by qualified personnel at least twice a year and re-marked with hazard and warning labels to ensure safety and proper performance. A safety package (part #TACWS) is available which includes one anti-climb warning sign and two Danger – Watch for Wires labels along with other printed safety information. One safety package is included with each tower.

Note:

$\frac{3}{8}$ " bolts are used on TBX1, TBX2 and the top of the TBX3 sections. $\frac{9}{16}$ " bolts are used on the bottom of TBX3 and all sections TBX4 through TBX8. TBX8 is the largest section.

One set of cross braces on one face of the top section is purposely left off to allow easy access to the rotor plate for installing the mast and rotor.

TBX TOWERS

Thomas Shelby and Co, INC

309 South Park Drive

St. Marys, OH 45885

(419) 394-3377

sales@thomasshelby.com

www.tbxtowers.com

www.thomasshelby.com

MANUFACTURED IN THE USA